



Government Gazette Staatskoerant

REPUBLIC OF SOUTH AFRICA
REPUBLIEK VAN SUID AFRIKA

Vol. 709

12

July
Julie

2024

No. 50926

N.B. The Government Printing Works will not be held responsible for the quality of "Hard Copies" or "Electronic Files" submitted for publication purposes

ISSN 1682-5845



AIDS HELPLINE: 0800-0123-22 Prevention is the cure

IMPORTANT NOTICE:

THE GOVERNMENT PRINTING WORKS WILL NOT BE HELD RESPONSIBLE FOR ANY ERRORS THAT MIGHT OCCUR DUE TO THE SUBMISSION OF INCOMPLETE / INCORRECT / ILLEGIBLE COPY.

No FUTURE QUERIES WILL BE HANDLED IN CONNECTION WITH THE ABOVE.

Contents

| <i>No.</i> | | <i>Gazette No.</i> | <i>Page No.</i> |
|---|--|------------------------|---------------------|
| GOVERNMENT NOTICES • GOEWERMENTSKENNISGEWINGS | | | |
| Transport, Department of/ Vervoer, Departement van | | | |
| 5030 | South African National Roads Agency Limited and the National Roads Act (7/1998): Declaration Amendment of National Road R391 Section 2: Amendment of Declaration No. 733 or 2016 | 50926 | 3 |
| 5030 | Suid-Afrikaanse Nasionale Padagentskap Beperk en Nasionale Paaie Wet (7/1998): Verklaring Wysiging van Nasionale Pad R391 Seksie 2: Wysiging van Verklaring No. 733 van 2016 | 50926 | 4 |

GOVERNMENT NOTICES • GOEWERMENTSKENNISGEWINGS

DEPARTMENT OF TRANSPORT

NO. 5030

12 July 2024

**THE SOUTH AFRICAN NATIONAL ROADS
AGENCY SOC LIMITED**Registration No: 1998/009584/30

DECLARATION AMENDMENT OF NATIONAL ROAD R391 SECTION 2

AMENDMENT OF DECLARATION No. 733 OF 2016.

By virtue of section 40(1)(b) of the South African National Roads Agency Limited and the National Roads Act 1998 (Act No. 7 of 1998), I hereby amend Declaration No. 733 of 2016 by substituting paragraph C of the Schedule, being the descriptive declaration of the route from its junction with National Road R56 Section 2 up to Burgersdorp, with the accompanying sheets 1 to 10 of Plan No. P1227/22.

In the town of Burgersdorp the R391 Section 2 enters the town from the South and then follows the street known as Queen Road which becomes Station Road up to its junction with streets known as Coligny Street and Smit Street, at the time of declaration.

(National Road R391 Section 2: R56 Junction - Burgersdorp)
MINISTER OF TRANSPORT

DEPARTEMENT VAN VERVOER

NO. 5030

12 Julie 2024

**DIE SUID-AFRIKAANSE NASIONALE
PADAGENTSAP MSB BEPERK**

Registrasie No: 1998/009584/30

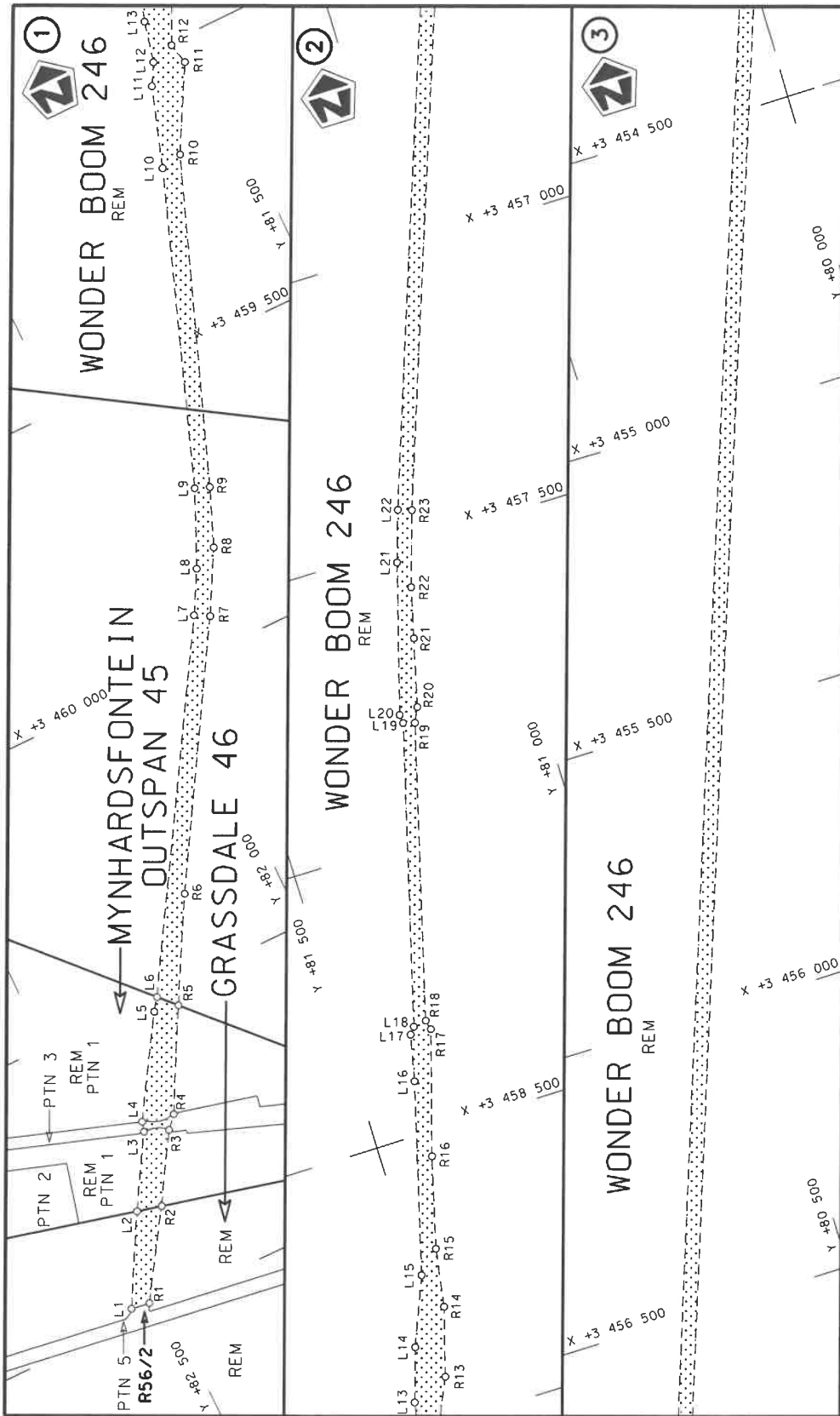
VERKLARING WYSIGING VAN NASIONALE PAD R391 SEKSIE 2


WYSIGING VAN VERKLARING No. 733 VAN 2016.

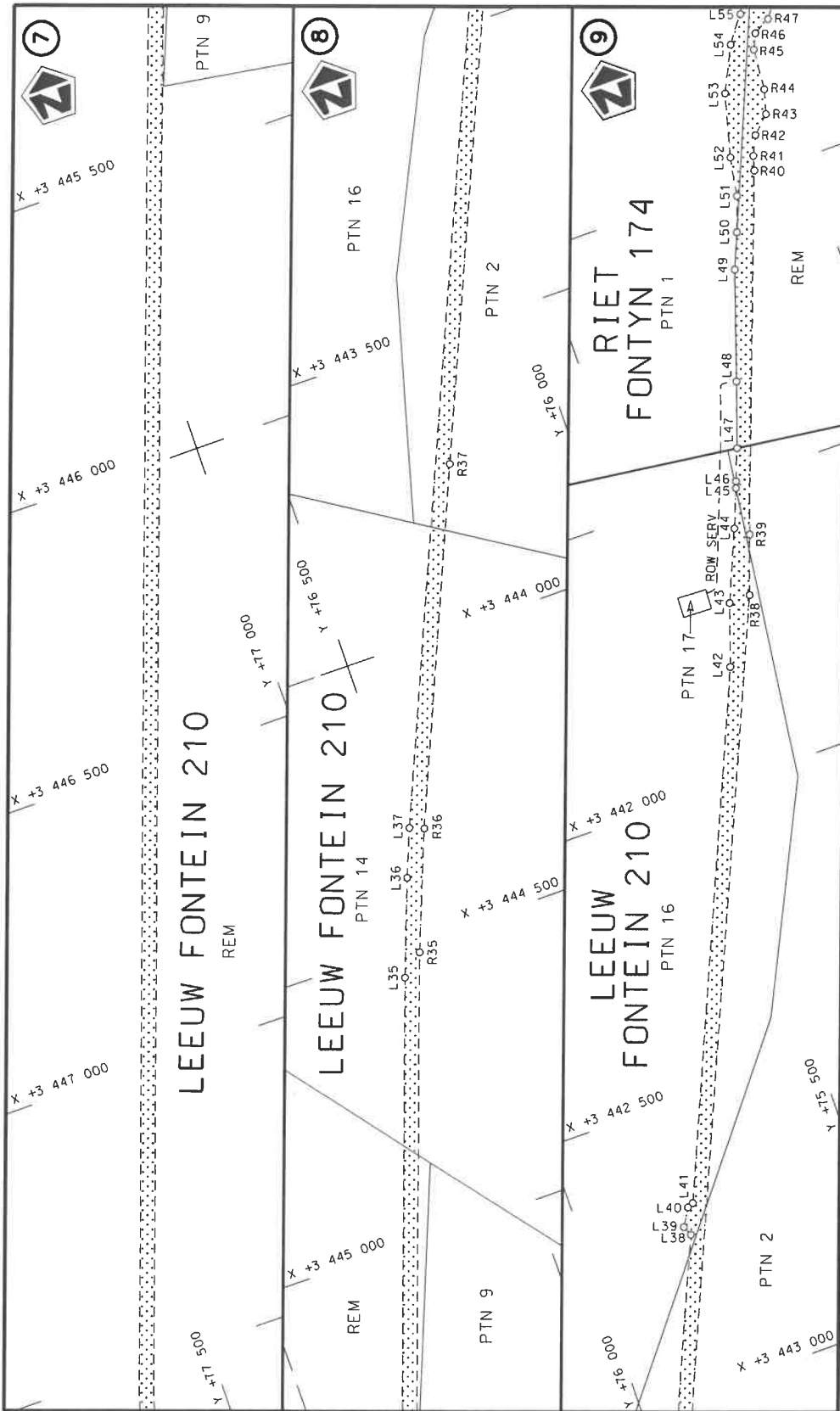
Kragtens Artikel 40(1)(b) van die Suid-Afrikaanse Nasionale Padagentskap Beperk en Nasionale Paaie Wet 1998 (Wet No. 7 van 1998), wysig ek hiermee Verklaring No. 733 van 2016 deur paragraaf C van die Skedule te vervang, synde die gedeelte van die beskrywende verklaring van die pad vanaf die aansluiting met Nasionale Pad R56 tot by Burgersdorp, met bygaande velle 1 tot 10 van Plan No. P1227/22.

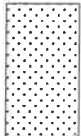
In die dorp van Burgersdorp kom die R391 Seksie 2 die dorp binne vanuit die Suide en volg dan die straat bekend as Koninginweg wat Stasieweg word tot by sy aansluiting met strate bekend as Colignystraat en Smitstraat, tydens datum van verklaring.

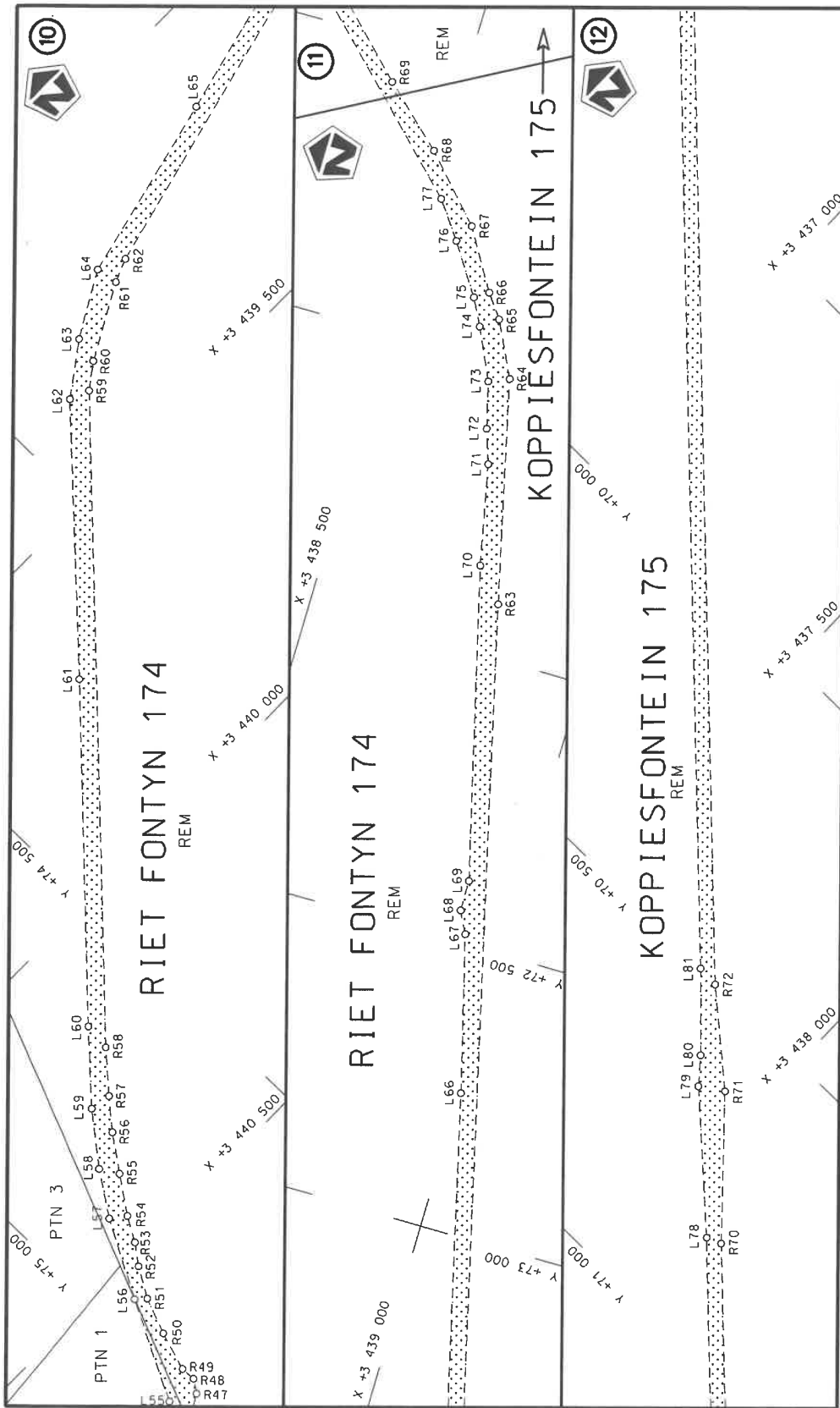
(Nasionale Pad R391 Seksie 2: R56 Kruising – Burgersdorp)
MINISTER VAN VERVOER




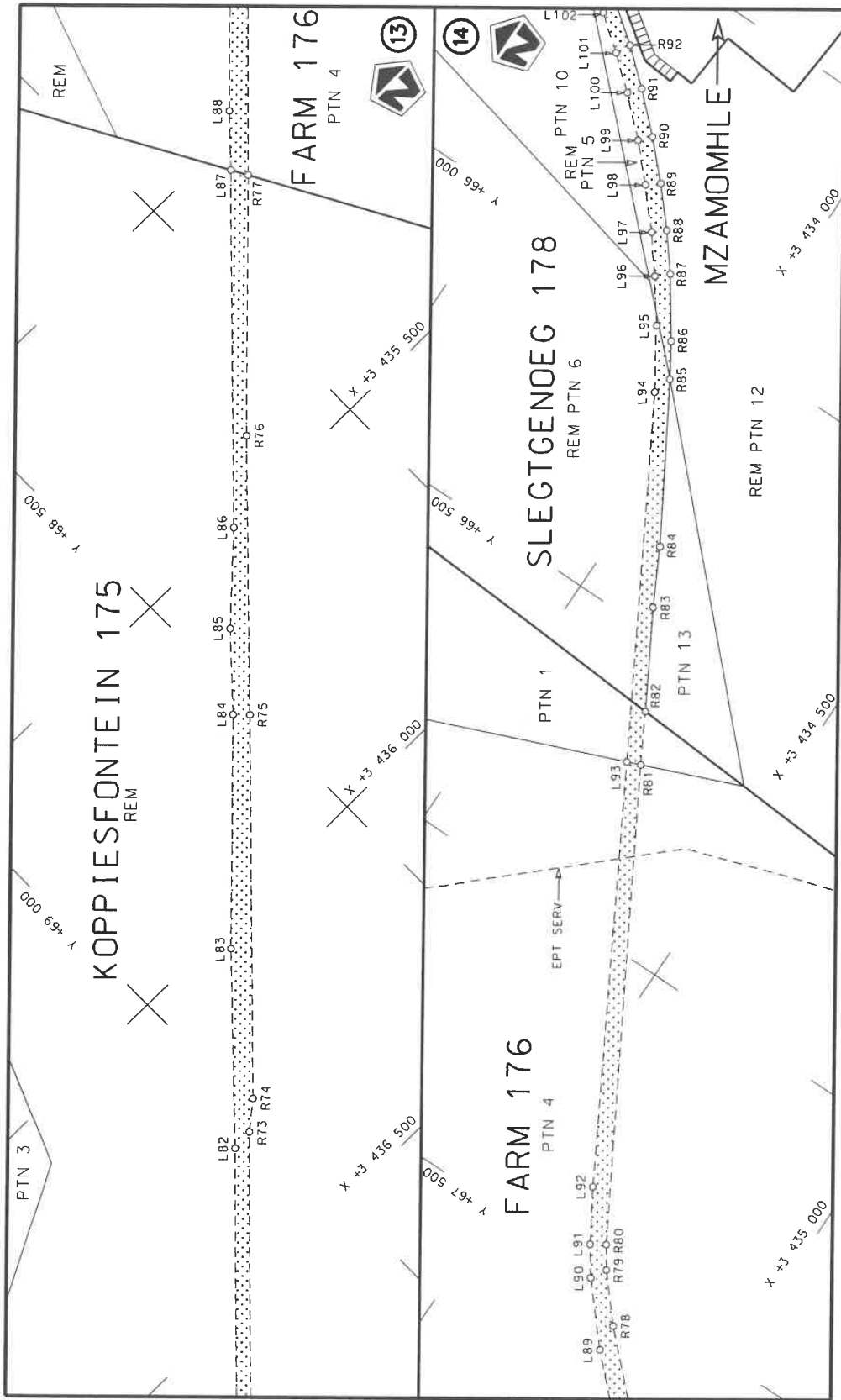
| | | | |
|---|---|---|--|
| <p>Die Suid Afrikaanse Nasionale Padagentskap MSB Bpk The South African National Roads Agency SOC Ltd</p> | <p>Die figuur getoon The figure shown</p>  | <p>steldie padreserwe voor van 'n gedeelte represents the road reserve of a portion van Nasionale Roete R391 Sektie of National Route Section</p> | <p>Vel Sheet 1 of 10 Plan P1227/22</p> |
|---|---|---|--|

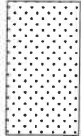


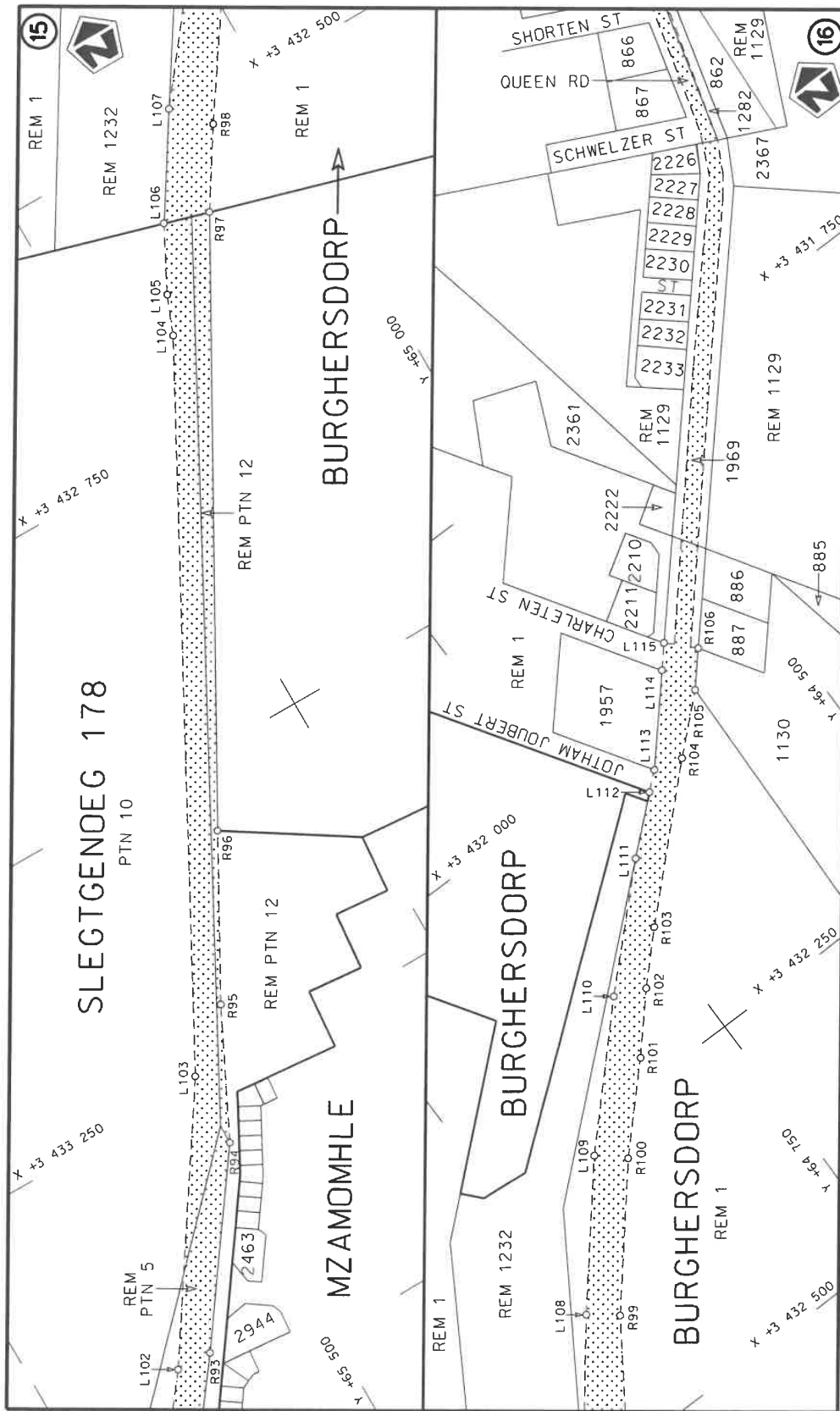
| | | | | |
|---|---------------------------------------|---|--|---------------|
| Die Suid Afrikaanse Nasionale Padagentskap MSB Bpk The South African National Roads Agency SOC Ltd | Die figuur getoon The figure shown |  | steldie padreserwe voor van 'n gedeelte represents the road reserve of a portion van Nasionale Roete R391 of National Route Section | |
| | | | Vel Sheet | van of |
| | | | 2 | Plan P1227/22 |




| | | | |
|---|---|---|--|
| <p>Die Suid Afrikaanse Nasionale Padogentskap MSB Bpk The South African National Roads Agency SOC Ltd</p> | <p>Die figuur getoon The figure shown</p> |  <p>stelt die padreserwe voor van 'n gedeelte represents the road reserve of a portion van Nasionale Roete R391 Sektie of National Route Section</p> | <p>Vel Sheet 4 of 10 Plan P1227/22</p> |
|---|---|---|--|



| | | | | |
|---|---|---|--|--|
| <p>Die Suid-Afrikaanse Nasionale Padagentskap MSB Bpk The South African National Roads Agency SOC Ltd</p> | <p>Die figuur getoon The figure shown</p> |  | <p>stel die padreserwe voor van 'n gedeelte represents the road reserve of a portion van Nasionale Roete R391 of National Route R391</p> | <p>Vel Sheet 5 of 10 Plan P1227/22</p> |
| | | <p>2</p> | <p>Seksie Section</p> | |



| | | | | |
|---|---------------------------------------|---|--|---------------|
| Die Suid Afrikaanse Nasionale Padagentskop MSB Bpk The South African National Roads Agency SOC Ltd | Die figuur getoon The figure shown |  | steldie padreserwe voor van 'n gedeelte represents the road reserve of a portion van Nasionale Roete R391 of National Route Section | |
| | | | Vel Sheet 6 of 10 | Plan P1227/22 |

| PADRESERWE KOÖRDINATE / ROAD RESERVE CO-ORDINATES | | | | | | |
|---|-----------|--------------|--------|----------------------------|-----------|--------------|
| LINKERKANT/LEFT HAND SIDE | | | | REGTERKANT/RIGHT HAND SIDE | | |
| | Y | X | WG 27° | | Y | X |
| L1 | 82 560.85 | 3 460 981.86 | | R1 | 82 528.28 | 3 460 986.36 |
| L2 | 82 478.38 | 3 460 830.91 | | R2 | 82 435.23 | 3 460 841.52 |
| L3 | 82 406.98 | 3 460 709.84 | | R3 | 82 366.21 | 3 460 725.91 |
| L4 | 82 402.50 | 3 460 692.66 | | R4 | 82 346.70 | 3 460 704.50 |
| L5 | 82 299.01 | 3 460 526.63 | | R5 | 82 256.65 | 3 460 535.14 |
| L6 | 82 284.27 | 3 460 505.75 | | R6 | 82 161.41 | 3 460 362.58 |
| L7 | 81 935.98 | 3 459 927.86 | | R7 | 81 911.08 | 3 459 941.36 |
| L8 | 81 896.63 | 3 459 856.08 | | R8 | 81 853.56 | 3 459 835.07 |
| L9 | 81 839.11 | 3 459 726.74 | | R9 | 81 813.96 | 3 459 736.30 |
| L10 | 81 648.90 | 3 459 194.37 | | R10 | 81 610.65 | 3 459 185.70 |
| L11 | 81 604.14 | 3 459 056.15 | | R11 | 81 533.80 | 3 459 042.93 |
| L12 | 81 583.72 | 3 459 019.30 | | R12 | 81 542.42 | 3 459 006.15 |
| L13 | 81 567.20 | 3 458 948.13 | | R13 | 81 502.51 | 3 458 920.93 |
| L14 | 81 537.99 | 3 458 855.36 | | R14 | 81 468.69 | 3 458 802.16 |
| L15 | 81 490.31 | 3 458 737.60 | | R15 | 81 452.69 | 3 458 700.31 |
| L16 | 81 402.12 | 3 458 407.40 | | R16 | 81 411.53 | 3 458 542.76 |
| L17 | 81 384.67 | 3 458 326.85 | | R17 | 81 348.07 | 3 458 328.00 |
| L18 | 81 375.25 | 3 458 315.21 | | R18 | 81 352.27 | 3 458 311.41 |
| L19 | 81 237.04 | 3 457 798.89 | | R19 | 81 217.08 | 3 457 804.61 |
| L20 | 81 238.81 | 3 457 783.53 | | R20 | 81 205.01 | 3 457 779.65 |
| L21 | 81 164.82 | 3 457 525.75 | | R21 | 81 175.38 | 3 457 662.06 |
| L22 | 81 136.66 | 3 457 437.81 | | R22 | 81 153.65 | 3 457 574.81 |
| L23 | 79 897.99 | 3 453 931.47 | | R23 | 81 112.91 | 3 457 445.65 |
| L24 | 79 876.95 | 3 453 866.65 | | R24 | 79 874.04 | 3 453 938.33 |
| L25 | 79 857.41 | 3 453 816.81 | | R25 | 79 849.18 | 3 453 881.92 |
| L26 | 79 613.14 | 3 453 125.15 | | R26 | 79 833.41 | 3 453 824.45 |
| L27 | 79 607.86 | 3 453 093.13 | | R27 | 79 630.70 | 3 453 250.89 |
| L28 | 79 581.67 | 3 453 020.20 | | R28 | 79 586.00 | 3 453 131.78 |
| L29 | 79 569.77 | 3 452 974.04 | | R29 | 79 550.66 | 3 453 069.44 |
| L30 | 79 461.23 | 3 452 695.70 | | R30 | 79 447.11 | 3 452 731.71 |
| L31 | 78 320.82 | 3 449 468.44 | | R31 | 78 333.51 | 3 449 579.28 |
| L32 | 78 251.08 | 3 449 231.56 | | R32 | 78 232.70 | 3 449 343.45 |
| L33 | 78 237.58 | 3 449 192.84 | | R33 | 78 190.82 | 3 449 226.39 |
| L34 | 78 194.02 | 3 449 109.23 | | R34 | 78 170.54 | 3 449 117.38 |
| L35 | 76 583.92 | 3 444 553.28 | | R35 | 76 544.79 | 3 444 519.54 |
| L36 | 76 522.54 | 3 444 388.01 | | R36 | 76 465.43 | 3 444 315.73 |
| L37 | 76 489.91 | 3 444 306.14 | | R37 | 76 213.09 | 3 443 723.12 |
| L38 | 75 815.38 | 3 442 730.79 | | R38 | 75 347.43 | 3 441 698.07 |
| L39 | 75 822.83 | 3 442 713.86 | | R39 | 75 313.26 | 3 441 597.15 |
| L40 | 75 803.59 | 3 442 682.95 | | R40 | 75 095.42 | 3 440 993.43 |
| L41 | 75 792.92 | 3 442 678.54 | | R41 | 75 088.98 | 3 440 968.24 |
| L42 | 75 421.24 | 3 441 806.40 | | R42 | 75 073.46 | 3 440 934.97 |
| L43 | 75 385.36 | 3 441 699.56 | | R43 | 75 043.66 | 3 440 906.27 |
| L44 | 75 334.68 | 3 441 578.23 | | R44 | 75 032.48 | 3 440 863.90 |
| L45 | 75 309.48 | 3 441 511.69 | | R45 | 75 027.90 | 3 440 791.18 |
| L46 | 75 305.19 | 3 441 500.32 | | R46 | 75 015.50 | 3 440 765.26 |
| L47 | 75 284.38 | 3 441 445.83 | | R47 | 74 986.70 | 3 440 748.40 |
| L48 | 75 247.16 | 3 441 334.10 | | R48 | 74 970.48 | 3 440 725.96 |
| L49 | 75 185.71 | 3 441 146.44 | | R49 | 74 971.58 | 3 440 699.73 |
| L50 | 75 160.81 | 3 441 085.44 | | R50 | 74 950.55 | 3 440 631.28 |
| L51 | 75 139.82 | 3 441 025.12 | | R51 | 74 925.99 | 3 440 567.91 |

| | | | | |
|--------------|---|-----------|----|----------|
| Vel Sheet | 8 | Van of | 10 | P1227/22 |
|--------------|---|-----------|----|----------|

| PADRESERWE KOÖRDINATE / ROAD RESERVE CO-ORDINATES | | | | | |
|---|-----------|-------|----------------------------|------|------------------------|
| LINKERKANT/LEFT HAND SIDE | | | REGTERKANT/RIGHT HAND SIDE | | |
| | Y | X | WG 27 ^o | Y | X |
| L52 | 75 128.13 | 3 440 | 957.47 | R52 | 74 896.01 3 440 516.69 |
| L53 | 75 100.44 | 3 440 | 847.51 | R53 | 74 870.27 3 440 482.74 |
| L54 | 75 063.26 | 3 440 | 769.53 | R54 | 74 845.65 3 440 440.32 |
| L55 | 75 030.11 | 3 440 | 723.71 | R55 | 74 802.22 3 440 378.08 |
| L56 | 74 943.50 | 3 440 | 552.97 | R56 | 74 758.33 3 440 317.79 |
| L57 | 74 871.54 | 3 440 | 420.71 | R57 | 74 716.53 3 440 268.59 |
| L58 | 74 821.03 | 3 440 | 346.35 | R58 | 74 659.08 3 440 203.97 |
| L59 | 74 753.81 | 3 440 | 262.48 | R59 | 73 849.40 3 439 369.44 |
| L60 | 74 653.86 | 3 440 | 156.40 | R60 | 73 806.75 3 439 338.11 |
| L61 | 74 226.11 | 3 439 | 714.43 | R61 | 73 679.79 3 439 268.23 |
| L62 | 73 884.25 | 3 439 | 355.91 | R62 | 73 638.96 3 439 251.56 |
| L63 | 73 796.60 | 3 439 | 292.72 | R63 | 71 906.12 3 438 821.30 |
| L64 | 73 686.06 | 3 439 | 230.25 | R64 | 71 518.17 3 438 728.05 |
| L65 | 73 359.98 | 3 439 | 152.81 | R65 | 71 422.17 3 438 680.37 |
| L66 | 72 754.36 | 3 439 | 002.17 | R66 | 71 381.57 3 438 650.27 |
| L67 | 72 482.06 | 3 438 | 930.27 | R67 | 71 277.28 3 438 587.23 |
| L68 | 72 443.88 | 3 438 | 910.67 | R68 | 71 167.96 3 438 485.14 |
| L69 | 72 389.99 | 3 438 | 909.92 | R69 | 71 071.81 3 438 379.48 |
| L70 | 71 848.92 | 3 438 | 771.65 | R70 | 70 823.51 3 438 125.10 |
| L71 | 71 672.99 | 3 438 | 734.54 | R71 | 70 625.82 3 437 941.71 |
| L72 | 71 613.58 | 3 438 | 714.12 | R72 | 70 502.60 3 437 796.83 |
| L73 | 71 532.44 | 3 438 | 693.17 | R73 | 69 030.24 3 436 290.52 |
| L74 | 71 443.80 | 3 438 | 650.93 | R74 | 68 983.64 3 436 252.51 |
| L75 | 71 397.17 | 3 438 | 626.47 | R75 | 68 507.86 3 435 761.54 |
| L76 | 71 309.73 | 3 438 | 568.47 | R76 | 68 163.51 3 435 402.64 |
| L77 | 71 246.00 | 3 438 | 521.61 | R77 | 67 836.78 3 435 073.23 |
| L78 | 70 833.56 | 3 438 | 099.47 | R78 | 67 559.62 3 434 789.92 |
| L79 | 70 652.01 | 3 437 | 901.33 | R79 | 67 483.77 3 434 723.57 |
| L80 | 70 609.84 | 3 437 | 865.86 | R80 | 67 446.58 3 434 698.02 |
| L81 | 70 500.28 | 3 437 | 758.50 | R81 | 66 703.69 3 434 268.69 |
| L82 | 69 068.53 | 3 436 | 293.74 | R82 | 66 620.49 3 434 222.29 |
| L83 | 68 823.79 | 3 436 | 034.85 | R83 | 66 459.27 3 434 129.24 |
| L84 | 68 528.44 | 3 435 | 739.96 | R84 | 66 362.97 3 434 078.49 |
| L85 | 68 424.91 | 3 435 | 627.28 | R85 | 66 106.33 3 433 925.11 |
| L86 | 68 294.17 | 3 435 | 503.35 | R86 | 66 049.24 3 433 889.17 |
| L87 | 67 852.29 | 3 435 | 045.18 | R87 | 65 951.23 3 433 820.35 |
| L88 | 67 780.37 | 3 434 | 968.32 | R88 | 65 890.64 3 433 771.34 |
| L89 | 67 608.14 | 3 434 | 793.91 | R89 | 65 827.37 3 433 715.47 |
| L90 | 67 511.24 | 3 434 | 708.26 | R90 | 65 767.14 3 433 656.78 |
| L91 | 67 462.14 | 3 434 | 673.67 | R91 | 65 706.78 3 433 592.28 |
| L92 | 67 374.32 | 3 434 | 620.25 | R92 | 65 654.48 3 433 531.36 |
| L93 | 66 713.12 | 3 434 | 245.29 | R93 | 65 601.28 3 433 460.56 |
| L94 | 66 139.90 | 3 433 | 916.42 | R94 | 65 493.27 3 433 308.20 |
| L95 | 66 040.53 | 3 433 | 851.93 | R95 | 65 439.14 3 433 198.34 |
| L96 | 65 969.42 | 3 433 | 799.92 | R96 | 65 364.89 3 433 063.71 |
| L97 | 65 907.97 | 3 433 | 750.89 | R97 | 65 098.90 3 432 586.03 |
| L98 | 65 844.30 | 3 433 | 694.40 | R98 | 65 057.15 3 432 519.83 |
| L99 | 65 786.11 | 3 433 | 638.93 | R99 | 64 976.89 3 432 399.15 |
| L100 | 65 726.69 | 3 433 | 574.96 | R100 | 64 887.95 3 432 291.95 |
| L101 | 65 679.40 | 3 433 | 518.42 | R101 | 64 826.02 3 432 227.27 |
| L102 | 65 633.30 | 3 433 | 459.11 | R102 | 64 785.21 3 432 180.96 |

| | | | |
|--------------|---|-----------|----|
| Vel Sheet | 9 | Van of | 10 |
|--------------|---|-----------|----|

P1227/22

| PADRESERWE KOÖRDINATE / ROAD RESERVE CO-ORDINATES | | | | | |
|---|-----------|--------------|----------------------------|------|------------------------|
| LINKERKANT/LEFT HAND SIDE | | | REGTERKANT/RIGHT HAND SIDE | | |
| | Y | X | WG 27° | Y | X |
| L103 | 65 490.26 | 3 433 241.62 | | R103 | 64 747.21 3 432 141.84 |
| L104 | 65 180.75 | 3 432 663.96 | | R104 | 64 638.22 3 432 036.80 |
| L105 | 65 167.29 | 3 432 629.98 | | R105 | 64 593.21 3 431 995.77 |
| L106 | 65 138.75 | 3 432 574.49 | | R106 | 64 568.97 3 431 967.95 |
| L107 | 65 084.61 | 3 432 488.98 | | | |
| L108 | 65 000.64 | 3 432 380.81 | | | |
| L109 | 64 910.35 | 3 432 271.99 | | | |
| L110 | 64 812.63 | 3 432 169.79 | | | |
| L111 | 64 724.29 | 3 432 083.66 | | | |
| L112 | 64 679.46 | 3 432 043.92 | | | |
| L113 | 64 664.26 | 3 432 030.88 | | | |
| L114 | 64 606.28 | 3 431 964.26 | | | |
| L115 | 64 590.38 | 3 431 945.99 | | | |

| | | | | |
|--------------|----|-----------|----|----------|
| Vel Sheet | 10 | Van of | 10 | P1227/22 |
|--------------|----|-----------|----|----------|

Printed by and obtainable from the Government Printer, Bosman Street, Private Bag X85, Pretoria, 0001
Contact Centre Tel: 012-748 6200. eMail: info.egazette@gpw.gov.za
Publications: Tel: (012) 748 6053, 748 6061, 748 6065